

**SETUP GUIDE
FOR THE**

DXassistant™

**Version 2.0
SOFTWARE**

**Manual Version 2
January 2017**



**D-tect Systems Group
Visionary Products Inc.
11814 South Election Road, Suite 200
Draper, UT 84020
www.dtectsystems.com**

Table of Contents

1	System Requirements	3
2	Overview	3
3	Installation Instructions	3
3.1	Installing the DX Assistant Server	3
3.2	Create an Account on the Dashboard	5
3.3	Add DX Devices to the Dashboard	7
3.4	Email Configuration	8
3.5	Downloading the DX Dashboard User Manual	10
3.6	Uninstalling DX Assistant	12

1 System Requirements

1. Operating System:
 - a. Linux - Ubuntu Server 16.04
2. Pre-Installed and Configured Packages
 - a. LAMP
 - i. Apache 2 (Tested with v. 2.4.18)
 - ii. MySQL (Tested with v. 14.14)
 - iii. PHP (Tested with v. 7.0.4)
 - b. ACL(Access Control Lists)
 - i. ACL is used to help define rights and permissions for files and directories.
 - ii. It can be installed with: `sudo apt-get install acl`
 - c. Mail client (nullmailer, sendmail, etc.)
3. CPU: 2.50+ GHz Dual core
4. RAM: 2 GB
5. Disk Space (typical 60 GB, but depends on number of devices – see below):
 - a. 40 GB – Linux Server
 - b. 5 GB - Base Installation + 2 GB per device.
6. Ethernet or Wi-Fi Network Connection
7. CD-ROM Drive

2 Overview

DX Assistant is a web application that consists of a website client called the DX Dashboard and a server back-end that interfaces with a database. The Dashboard is accessed from a web browser to manage and monitor a network of deployed DX-family devices. The DX devices communicate with the server to report device events and poll for new device settings. Device events and settings are stored in the database.

3 Installation Instructions

It is recommended (though not necessary) that a trained IT professional with server configuration experience perform the DX Assistant setup process.

3.1 Installing the DX Assistant Server

Prior to installation, it is necessary to configure a static IP Address on the DX Assistant server machine or use DHCP reservation.

1. Log in to the DX Assistant server machine.
2. Insert the DX Assistant installation CD.

3. Make a temporary mount location for the cd-rom:
`mkdir /tmp/cdrom`
4. Get the name of the cdrom. Enter the following command and note the device name at the top of the output. Press 'q' to exit the information screen.
`less /proc/sys/dev/cdrom/info`
5. Mount the cdrom to the temporary folder. Replace 'deviceName' in the command below with the device name obtained in step 4.
`sudo mount /dev/deviceName /tmp/cdrom`
6. Navigate to the cd-rom location:
`cd /tmp/cdrom`
7. Install the package using the following command. Be sure to replace the ##### with the actual version number.
 - a. `sudo dpkg -i V020688_#####_DxAssistant.deb`
8. During the install process, you will be prompted to enter the root password for your MySQL installation as shown in Figure 1. Enter the password and then hit the Enter key to proceed.

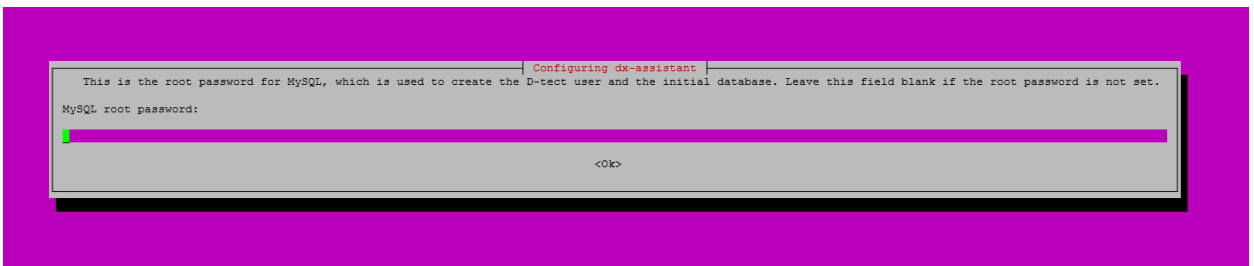


Figure 1: Database Password Prompt

9. Upon successful completion, the script will terminate and then return to a prompt as can be seen in Figure 2.



Figure 2: Successful Install

10. DX Assistant is now installed on the server.

3.2 Create an Account on the Dashboard

1. Open a web browser and navigate to the DX Dashboard by entering the IP address of the DX Assistant server.
2. You will be presented with the login screen shown in Figure 3. Click the Register button.



Figure 3: Register Button

3. On the next form, fill out the registration information, then click the Submit button.

radDX

Welcome to the DX Registration

Create Admin Name and Password (required)

First Name: Admin Name:

Last Name: Admin Password:

Company: Repeat Admin Password:

Address:

City:

State:

Zip Code:

Telephone:

Email Address:

Comments:

Type the phrase shown below (required)

Security Phrase:

Figure 4: Submit Registration Information

4. You will then be presented with a success message indicating that the new account has been created. Click the Ok button.

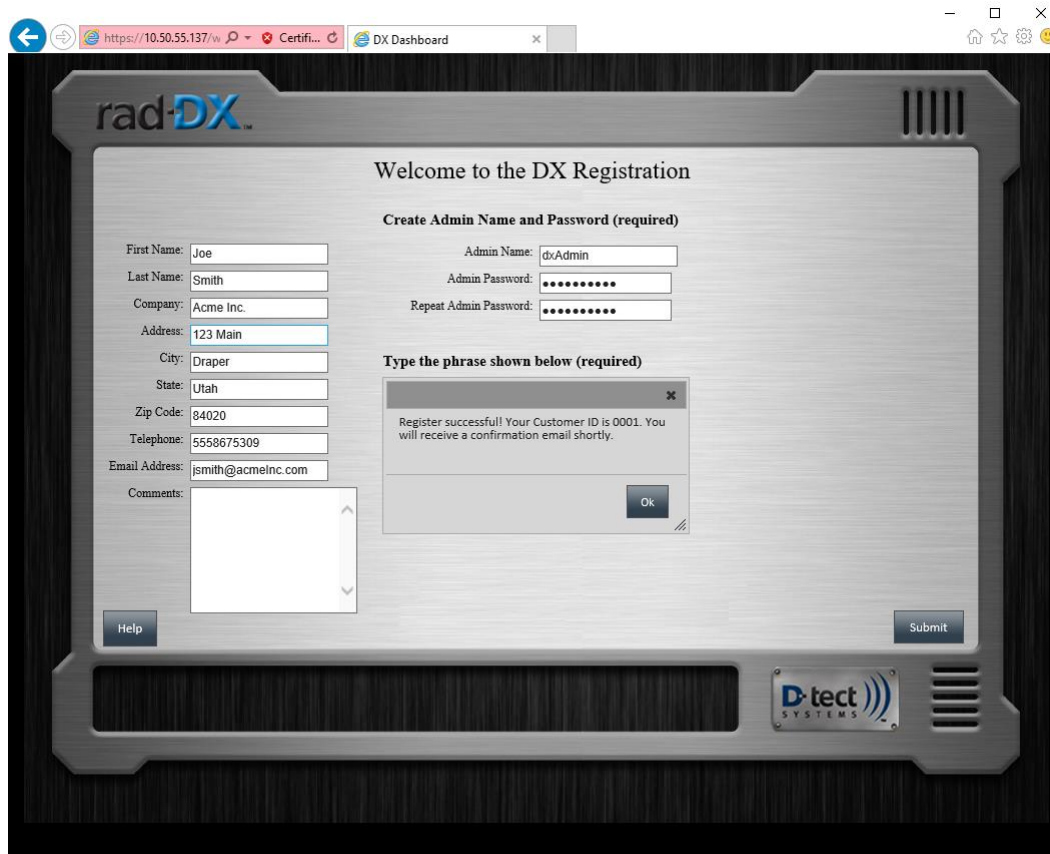


Figure 5: Successful Registration

3.3 Add DX Devices to the Dashboard

DX devices need to be initially configured to communicate with the Dashboard using the DX Dashboard Setup Tool, which is a Windows application that configures DX devices through the USB interface. The DX Dashboard Setup Tool can be downloaded from the Dashboard.

1. From the Windows PC where the DX Dashboard Setup Tool will be installed, login to the Dashboard and select the Software Download tab. The Setup Tool installer may be downloaded at this time and moved to another Windows PC for installation.
2. Click the Download button, to download the Setup Tool installer.
3. Click the Quick Start Guide button to download the Dashboard Setup Tool Quick Start Guide.
4. Refer to the Dashboard Setup Tool Quick Start Guide for installing the Setup Tool and to finish adding DX devices to the Dashboard.

3.4 Email Configuration

The Dashboard can be configured to use an SMTP server (not provided) to send device event emails.

1. Login to the Dashboard and select the Settings tab.

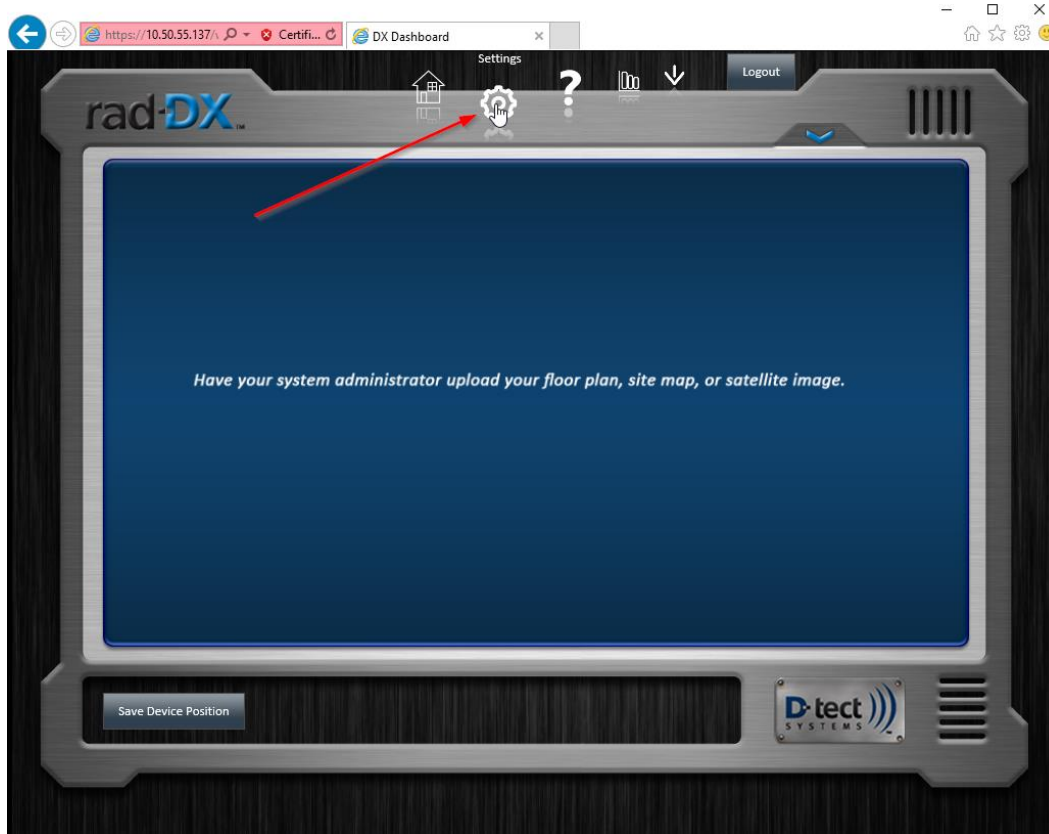


Figure 6: Settings

2. On the Settings tab, you can configure the SMTP server settings by entering the server IP address or host name and port. If the SMTP server requires authentication credentials, click Use Authentication and enter the SMTP credentials. (See Figure 8)

NOTE: If the DX Assistant server is using a static IP address, the SMTP server host name may not resolve correctly unless a static DNS server is also configured on the DX Assistant server.

3. After the SMTP server settings have been configured, a test email can be sent to validate that the settings are correct. Click the Test Email button and provide an email address. Click the Send Test Email button to send the test email.

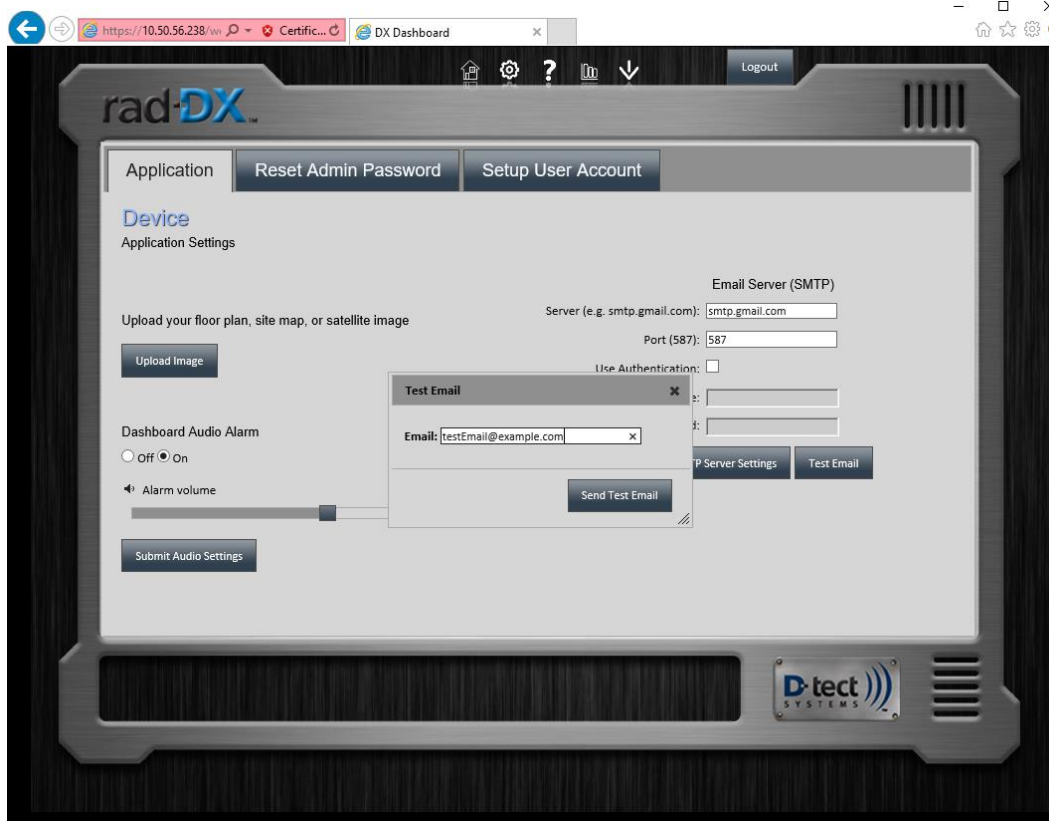


Figure 7: Test Email

4. Once the SMTP server settings have been configured/validated, click the Submit SMTP Server Settings button to save the settings.
5. To configure the DX devices so that they send device event emails, refer to the 'Alarm Screen' section of the DX Dashboard Manual (see 'Downloading the DX Dashboard User Manual' below).

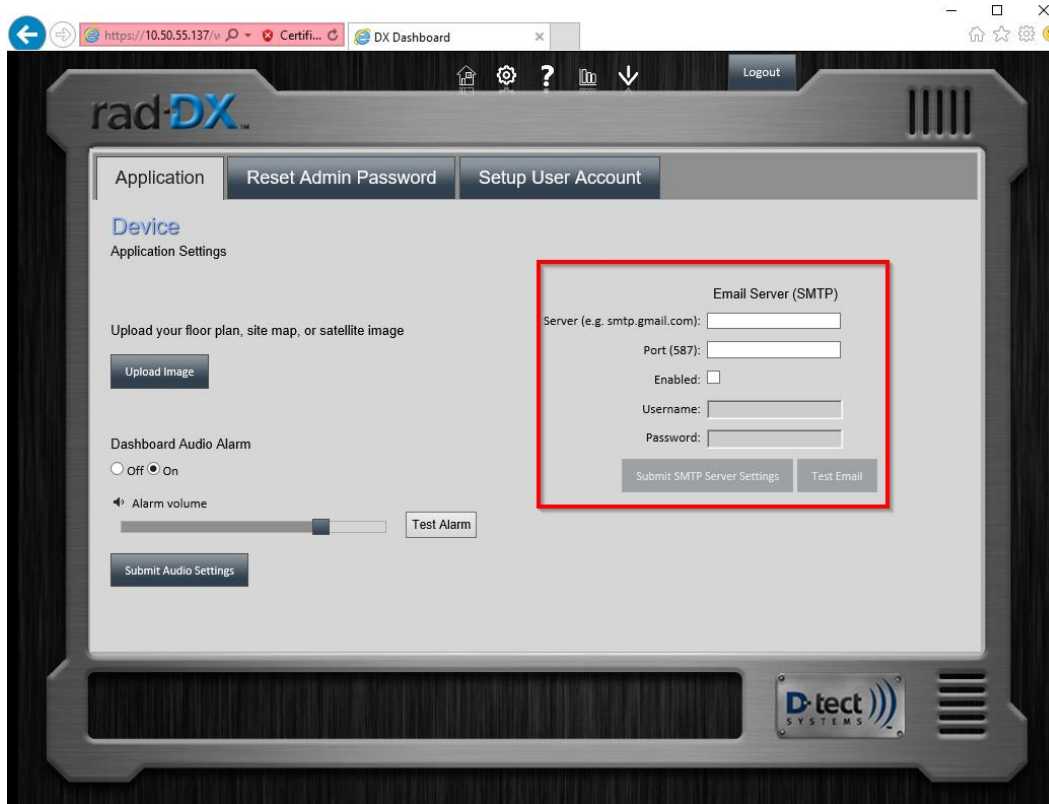


Figure 8: Email server settings

3.5 Downloading the DX Dashboard User Manual

A detailed manual on how to use the Dashboard and its features can be downloaded from the Dashboard.

1. Login to the Dashboard and select the Help tab.

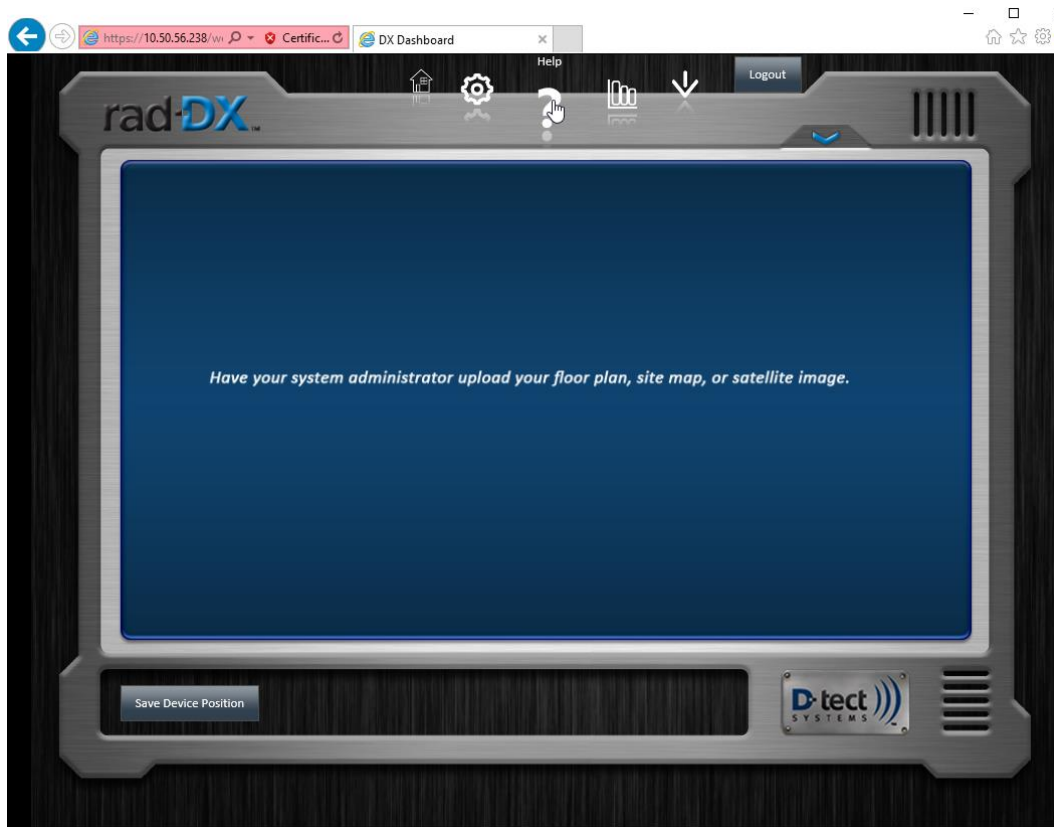


Figure 9: Help section

2. Click the User Manual tab.
3. Click the User Manual button to download a PDF copy of the DX Dashboard User Manual.

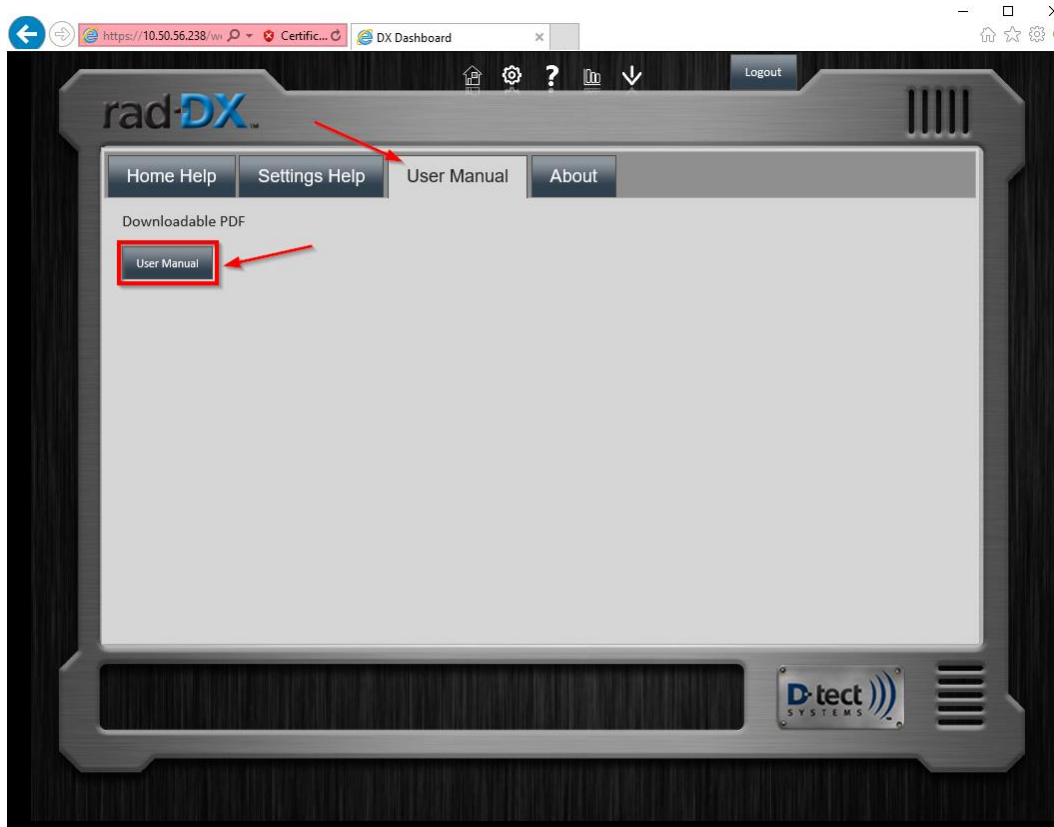


Figure 10: User manual

3.6 Uninstalling DX Assistant

The DX Assistant software including the Dashboard may be removed from the server using the uninstall procedure.

1. Log in to the DX Assistant server console.
2. Type the following command to uninstall DX Assistant:
`sudo apt-get remove --purge dx-assistant`

NOTE: The uninstaller does not modify or remove database entries and device events created by DX Assistant. To delete this data, the `dtect_` databases must be manually removed from MySQL, as well as the 'dxdashboard' user that is no longer needed.