

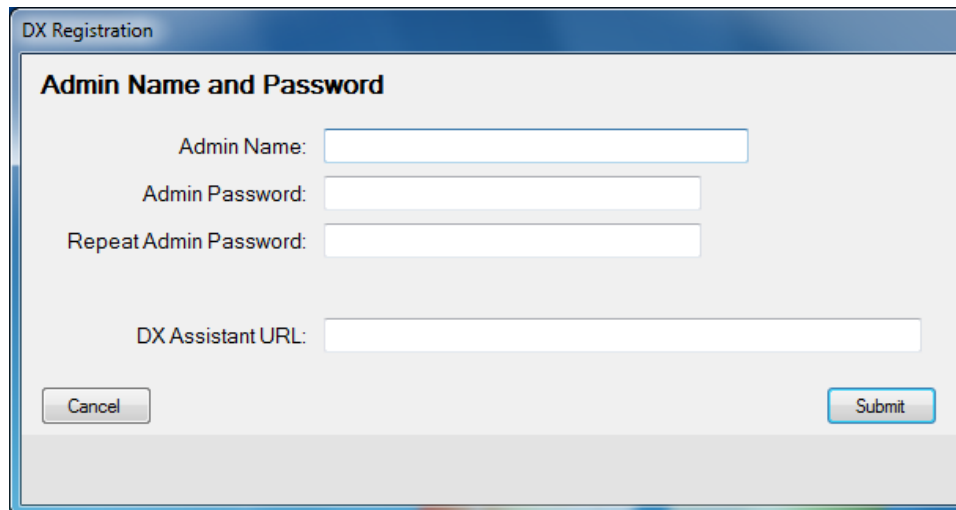
DX-Dashboard Setup Tool Quick Start Guide

The DX Dashboard Setup Tool is used for configuring a Rad-DX to communicate on the DX-Dashboard web server. The DX Dashboard Setup Tool works for both the D-tect Systems Cloud server and a DX-Assistant server.

1. The DX-Dashboard Setup Tool can be downloaded or installed from a CD. Click the “exe” file to begin the installation process.
 - a. To download the DX-Dashboard Setup Tool, log into your DX Account at <https://dx.dtectsystems.com/web/loginScreen.html> or register to receive your DX Account by pressing the “Register” button on the same webpage.
 - b. If you just registered for your DX Account. You should receive a confirmation email shortly. Use your Admin Username and Password to log you’re your Dashboard account. Click on the “Download Software” icon in the upper right hand corner of the home screen, and then click on the download button for the DX-Dashboard Setup Tool software.

Set Up a Device

1. When the Dashboard Setup Tool runs for the first time the DX Registration window will display. The DX Registration process will not work if the computer you are using cannot communicate with the DX Dashboard server you are configuring to (D-tect Systems Cloud server or a local DX Assistant server). Fill in your Admin Name and Password that you received from the DX Account confirmation email or use your current account information. If you are configuring a device to a DX Assistant account, make sure the DX Assistant URL is correct and that the DX Assistant is setup and running. The URL for the DX Cloud Server account is d1.dtectsystems.com.



The image shows a screenshot of a software registration window titled "DX Registration". The window has a blue header bar. Below the header, there is a section titled "Admin Name and Password" in bold. This section contains four input fields: "Admin Name:", "Admin Password:", "Repeat Admin Password:", and "DX Assistant URL:". Each field is represented by a white rectangular box with a blue border. At the bottom of the window, there are two buttons: "Cancel" on the left and "Submit" on the right, both with a light blue background and a blue border.

Figure 1: DX Registration Window

2. The main window for the DX Dashboard Setup Tool will display.



Figure 2: DX-Dashboard Setup Tool Home Screen

3. Plug a Rad-DX or Mini Rad-DX radiation detector into the computer via a USB cable.
 - a. If the device is brand new and not tied to any other accounts, the system will automatically assign it to the signed in account.
 - b. If the device was tied to a different account, a message box will pop up and display a locked window with some options. Select the Switch Device to Current Account button to automatically configure the device to your account.



Figure 3: Locked Device Options Screen

4. If the attached device is a Rad-DX that will be used as a gateway/host via Wi-Fi then do the following. Otherwise skip this step. Click on the Communications tab of the Device Settings tab. In the Wi-Fi settings pane enable Wi-Fi communication by selecting the corresponding radio button.
 - c. Input the appropriate Wi-Fi settings and then click the Submit button.

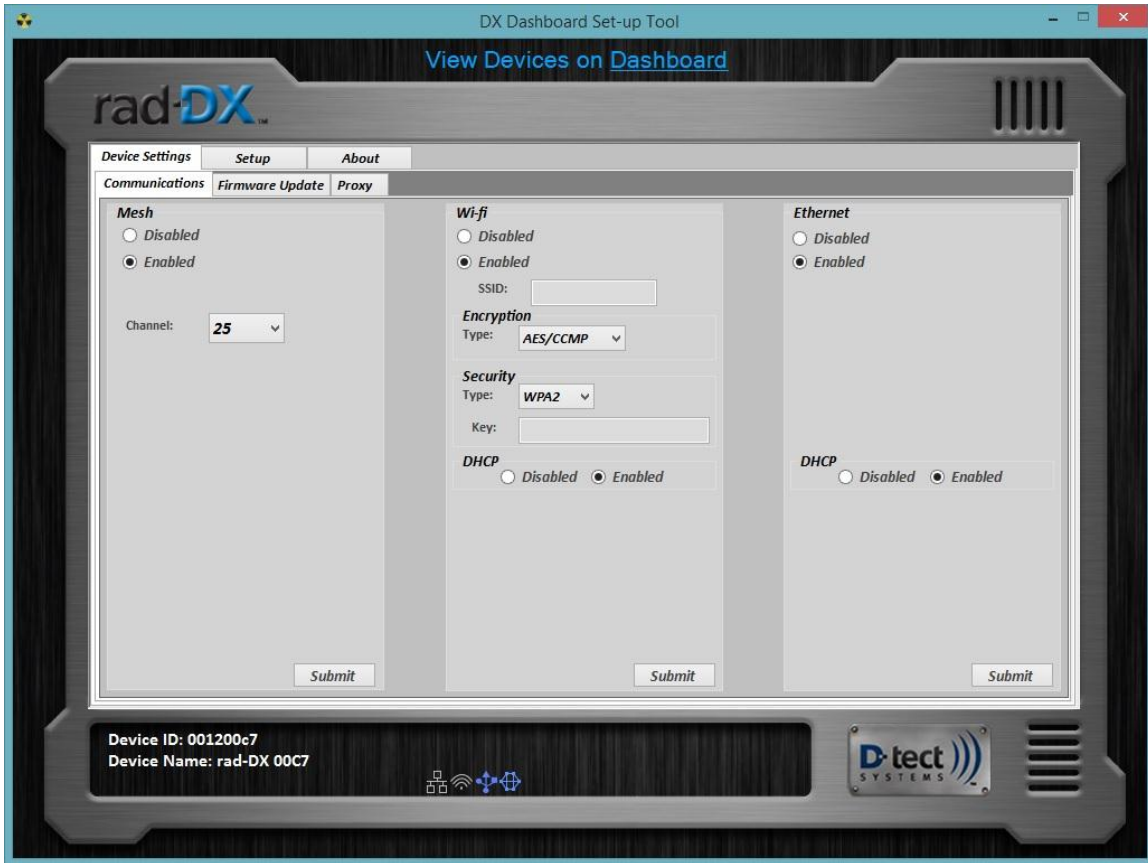


Figure 4: Device Settings Communication Tab

For more information regarding the DX-Dashboard, please refer to the DX-Dashboard manual.

For more information regarding the Rad-DX product line, you can download the product manuals directly from the D-tect website at <http://www.dtectsystems.com/downloads.html>.