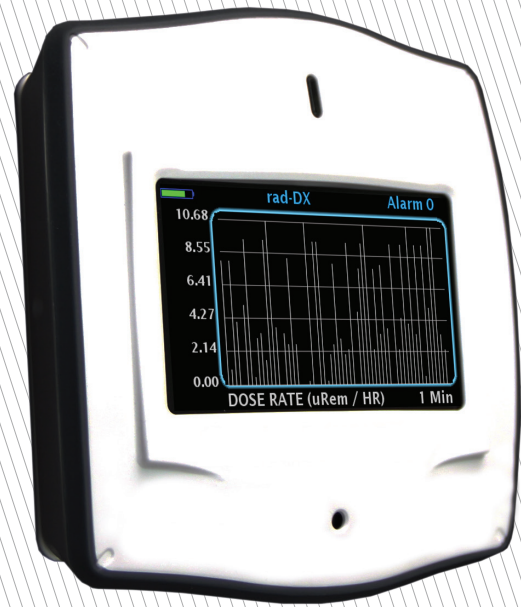


Rad-DX

Wireless Mesh Networked Radiation Detector



Features

- D-tect SensorNet (mesh network) equipped - automatic connections between all Rad-DXs within 1000 m
- Integrates with a local network via encrypted Wi-Fi or Ethernet
- Integrated floorplan design shows the radiation source
- Mounts on standard electrical junction boxes
- Blends into public areas - small, lightweight, and innocuous
- IP65 rated (sealed against dust and rain)
- Radiation detection in less than 1 second
- Sensitive Dose Rate and Total Dose measurement and recording



Intuitive Information Displays

Monitor Rad-DXs on floor plan or map displays providing an intuitive understanding of the location of a radioactive source. Dose rates can be viewed in multiple graph formats.



Control & Monitor with a Smartphone/Tablet/PC

Each Rad-DX can be controlled and monitored by a PC on the network or across the internet on any tablet or remote PC. 128-bit encryption protected. Monitoring can be real-time or past event logs can be reviewed.





Mesh Communication

The Rad-DX operates on the new D-tect SensorNet - an automatic communication network that allows users to monitor a full network of Rad-DXs as long as they are in range of a single Rad-DX system! The Rad-DX units will automatically form an intelligent, self-healing mesh network, allowing them to be constantly connected to each other as well as to the user network.



Radiation Detection

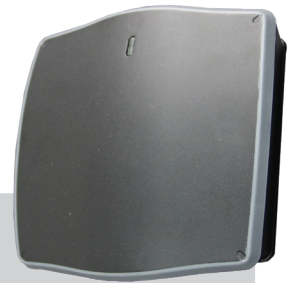
Rad-DX products are part of D-tect Systems' growing line of radiation detection products that can communicate with one another using a mesh network as well as Wi-Fi and Ethernet. Combined with this flexible communication, a sensitive scintillation detector allows the Rad-DX to detect even faint sources of radiation within 1 second.



System Configuration Options

The DX View is a PC application used to monitor and configure Rad-DX detectors. Multiple detectors can be configured as long as one detector is connected to the PC directly and the other detectors are configured to communicate via the mesh network.

The DX Dashboard is a web server application. This software can also be used to monitor and control a Rad-DX network. It runs on either the D-tect Cloud server or the DX Network Assistant (if installed at your facility). Using the DX Dashboard, you can access your Rad-DX network using any web-enabled device (smartphone, tablet, PC).



SPECIFICATIONS

Radiation Detector	Large cesium iodide scintillation (CsI) crystal
Communication	D-tect SensorNet, Wi-Fi, Ethernet, USB
Power	120/240V AC, 50/60Hz
Detection Speed	Less than 1 second
Energy Range	50 keV - 2 MeV
Battery Back-up	Lithium Ion
Dose Rate Range	1 μ Rem/hr - 100 mRem/hr (0.01 μ Sv/hr - 1 mSv/hr)
Dose Rate Linear Error	+/- 10%
Units	mrem/hr, μ Sv/hr, cps
Dimensions	5.97" x 5.92" x 1.75" (15.2 cm x 15 cm x 4.4 cm)
Weight	Non-display version: 0.5 lb (0.2 kg) Display version: 0.65 lb (0.3 kg)
Environment	IP65 rated for indoor/outdoor operation; NEMA Enclosure available for added environmental protection



Rad-DX



A DIVISION OF LUDLUM MEASUREMENTS, INC.

© D-tect Systems 2024