



**D-tect**  
SYSTEMS

D-tect Systems offers a rugged, field-ready line of equipment designed for accurate radiation detection and identification. We design our products to combat the urgent threat of from hazardous substances such as “dirty bomb” materials, nuclear device components, and toxic industrial chemicals. Our devices are used around the world by first responders, military personnel, security forces, public safety officers, waste management, embassies, and food testing services. Our goal is to provide the most powerful, affordable, and deployable security products available.

## MiniRad-D

### Rugged Personal Radiation Detector

- Works in all weather and temperatures
- Highly sensitive scintillator detector
- Rugged, endures 3 ft drop onto concrete
- Loud alarm or discreet silent operation
- Easy to use, no training required
- Bright display, readable day or night
- Handheld, light weight
- 2 AA batteries power device for 5000 hours



## MiniRad-V

### Unobtrusive Vehicle Mounted Radiation Detector

- In-cab display shows detected radiation
- All-weather exterior detector
- Powered by 12VDC vehicle power
- Small, mounts anywhere
- Easy to use, no training required
- Highly sensitive scintillator detector
- Loud alarm or discreet silent operation
- No maintenance required



## Rad-ID

### Advanced Handheld Radiation Identifier

- One button-operation
- 4 sensor types (CZT, NaI, GM, He3)
- Identifies 107 radioactive isotopes
- Bluetooth enabled for remote operation
- Ruggedized, water resistant
- Uses D-cell batteries
- Bright, 65,000 color LCD display
- No special training required



## Rad-D

### Highly Sensitive Fixed-Mount Radiation Detector

- Uses large 3" x 2" NaI(Tl) with PMT
- Small, mounts anywhere
- Easy to use, no special training needed
- Gamma or neutron radiation detectors
- 24/7 Operation
- Automatic calibration
- Displays counts and radiation level (1-9)
- System can support up to 4 detectors



## Sentry-RMS

### Fully-Networked, hardened, and encrypted security monitor to protect sensitive video and data

- Constant state of health monitoring
- Monitor from anywhere with internet connection
- Standard sensors include radiation, light, tamper, and two cameras
- Secure web access available for senior personnel
- Sends email & text alerts within 5 seconds when any alarm is activated
- Intuitive, easy to use monitoring software for security personnel
- Video playback, fast forward and still snapshots



## Sentry-Seal

### Asset Monitoring System in tandem with the Sentry-RMS

- Secure and protect any asset
- Tethered or Wireless
- Connects asset to Sentry-RMS alarm
- Additional sensors for further security
- Protects access to drawers, panels, cabinet or door
- Proprietary encryption algorithms for tamper protection
- Sentry-Seal wireless uses Bluetooth connection with receiver connected to Sentry-RMS



## Wireless Mesh Networked Radiation Detection

Rad-DX is a security and inspection system that detects emissions from radioactive material. The Rad-DX system can operate as a stand-alone detector or as part of a larger Rad-DX mesh network for monitoring an area such as a building or facility. These devices are available in multiple options and there are several software choices for system configuration.

### MiniRad-DX

#### Personal Radiation Detector

- Works in all weather and temperatures
- Highly sensitive scintillator detector
- Rugged, endures 3 ft drop onto concrete
- Loud alarm or discreet silent operation
- 2 Bright, High Resolution Displays
- Mesh Network Enabled



### Rad-DX

#### Area Radiation Monitor

- Operates on the D-tect SensorNet
- Network integration via Wi-Fi or Ethernet
- Control and monitor on tablet or PC
- Detects radiation in less than 1 second
- IP65 Rated
- Integrated floor plan for easy monitoring
- Blends into public areas
- Multiple detector versions

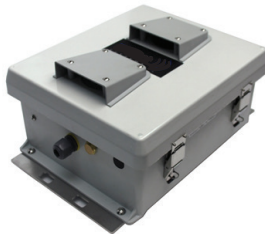


### Rad-DX

Rugged Enclosure

#### Rugged Enclosure for Rad-DX

- Designed to house a Rad-DX
- NEMA rated enclosure
- Includes two higher gain antennas
- Longer lasting backup battery
- Contains a cooling fan
- Attaches to power poles using provided metal band
- Mounting holes provided for easy installation



### DX-Assistant

#### Local Network Server for the Rad-DX

- Stand-alone local server
- Supports a network of Rad-DX detectors
- Operates inside of a protected firewall
- Preloaded with configuration software
- Password controlled
- No maintenance required
- Allows configuration through the Ethernet, Wi-Fi, and mesh communication channels
- Includes all hardware, OS, and applications server software



### DX-Dashboard

#### Web-based Application

- Monitor and control detectors remotely
- Fast setup
- Hosted solution
- No server installation required
- Real-time monitoring
- 128-bit AES encryption



### DX-View

#### PC Software Application

- Self-contained system
- Easy installation
- Add and configure detectors
- View and download data
- Real-time monitoring
- 128-bit AES encryption

### DX-Link

#### Wireless USB Mesh Network Enhancer

- Operates on the D-tect Sensor Net
- Uses a standard USB port
- Can be used as a 'gateway' between a tablet/PC and a network of Rad-DX devices
- Works as a 'repeater' between Rad-DX devices
- No software needed to act as a repeater
- Comes with a USB power adapter that plugs into a standard outlet

