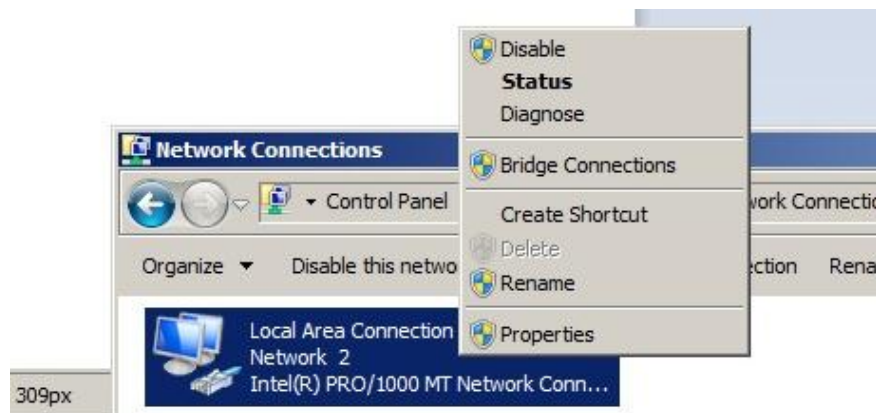


## DX Assistant Quick Start Guide

The DX Assistant is a stand-alone local server specifically designed to support a network of DX enabled radiation detectors inside your own protected firewall. Software on the DX Assistant allows for flexibility in configuring Rad-DX detectors to use the communication channels Ethernet, Wi-Fi, and SensorNet mesh networking. Additionally, MiniRad-DX detectors can be configured using the SensorNet mesh network.

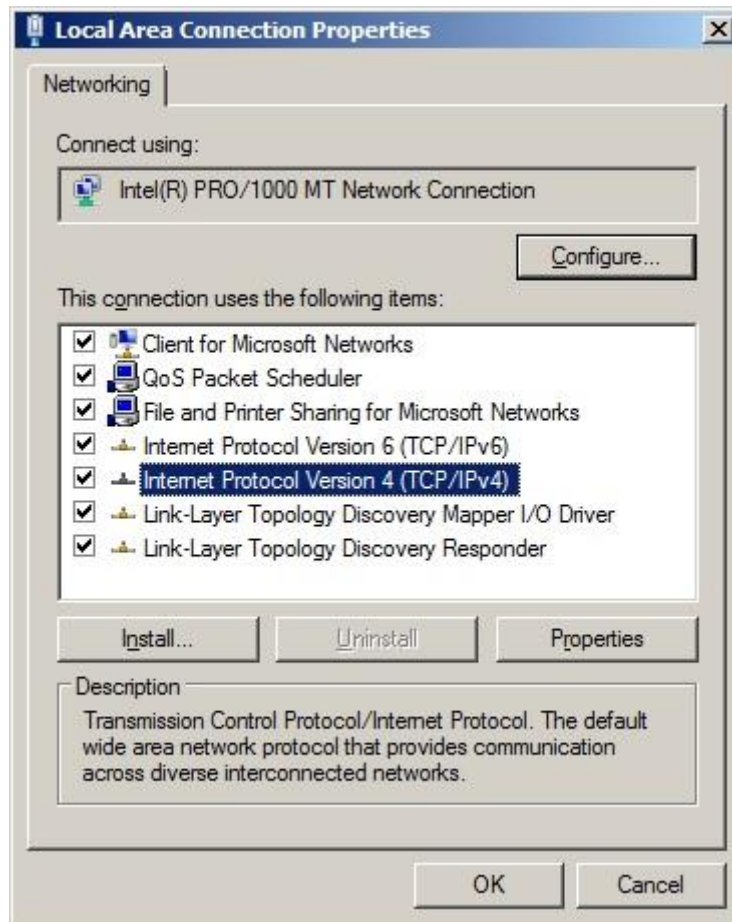
### Set up the Network

1. Open Control Panel and click on Network and Sharing Center.
2. Click on Change adapter settings in the menu on the left side of the screen.
3. Select your network and right click in the highlighted area.
4. Open the Properties window for the primary network adapter.



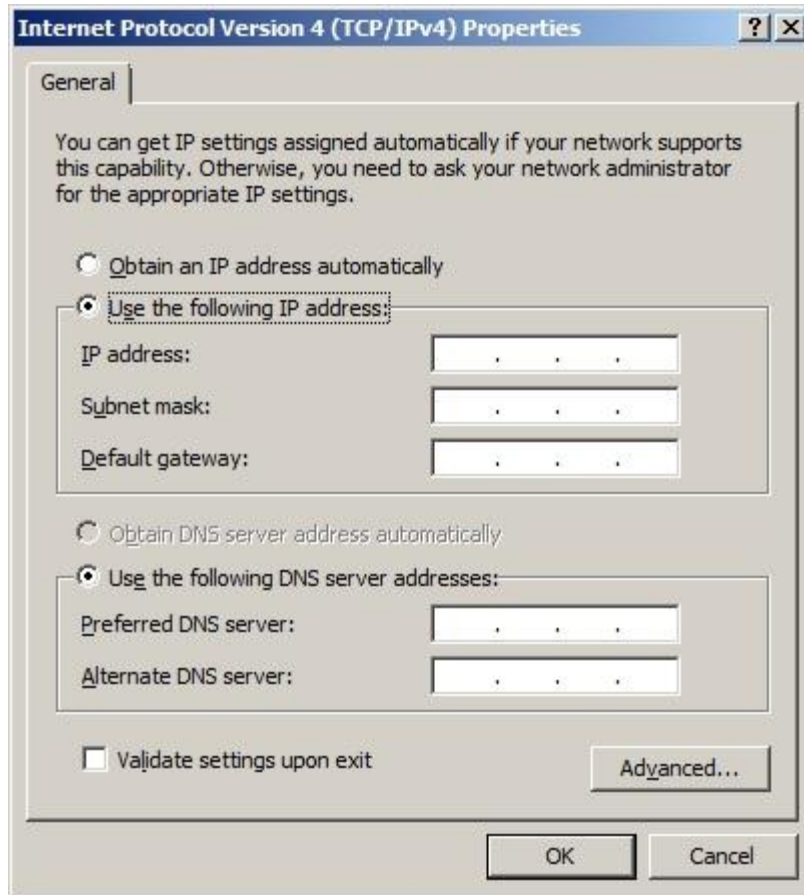
**Figure 1: Properties Window for the Network Adapter**

5. In the Properties window for the primary network adapter: select the "Internet Protocol Version 4(TCP/IPv4)" item and click Properties.



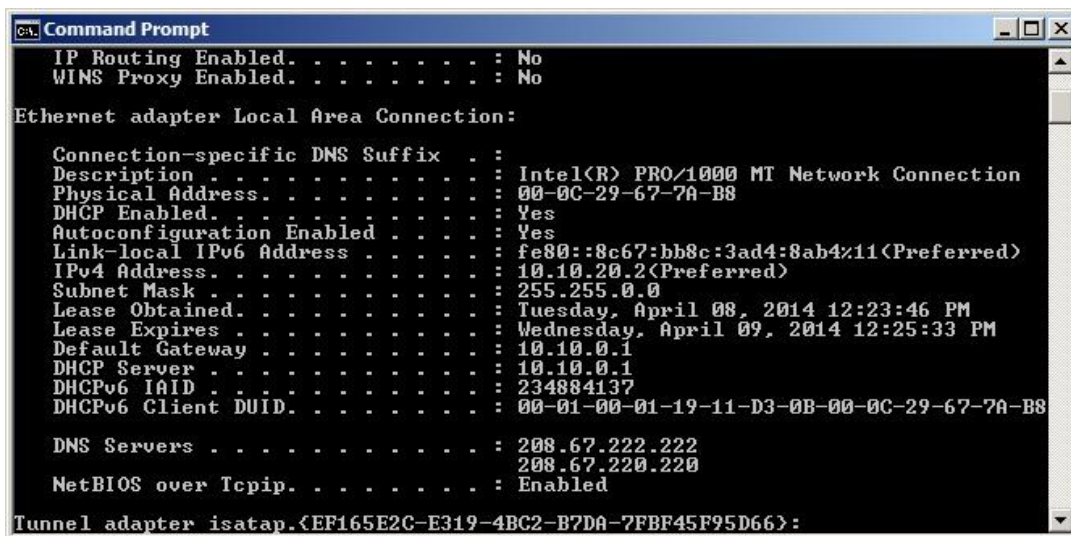
**Figure 2: Local Area Connection Properties**

6. Change the properties of the IPv4 to "Use the following IP address:" and "Use the following DNS server address:"



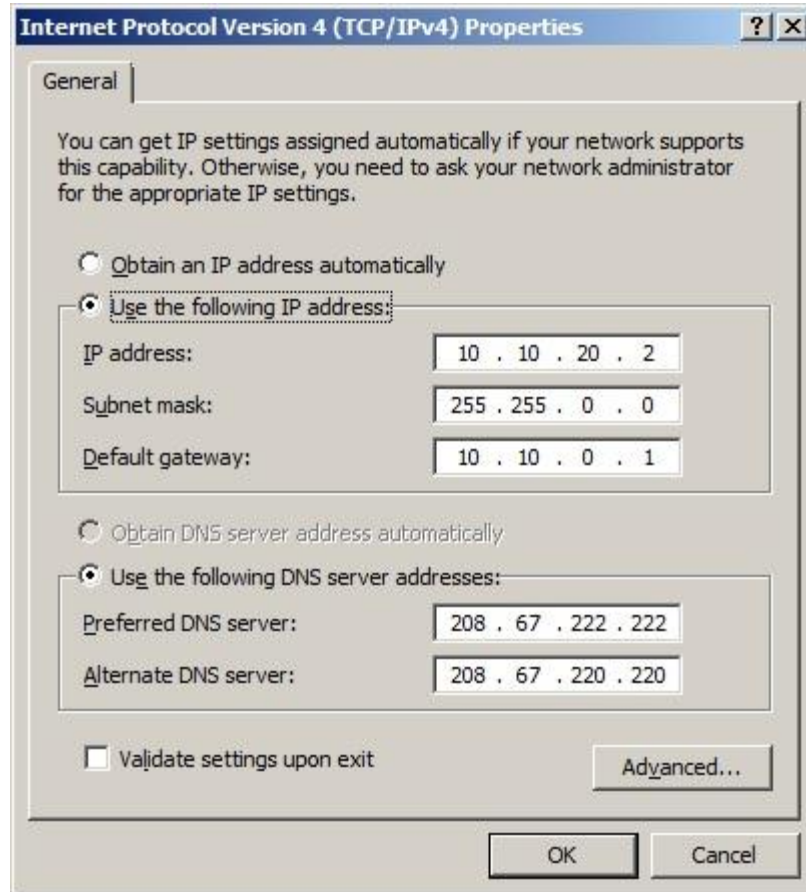
**Figure 3: IPv4 Properties Window**

7. To find your current network settings, click the Start button, type cmd in the search box and hit Enter. Alternatively, you can navigate to All Programs > Accessories > Command Prompt. This opens a command prompt window.
8. Type: "ipconfig /all". A list of information will populate in the window.



**Figure 4: Command Prompt – ipconfig**

9. From the corresponding information in the command prompt window, fill in your IP address, Subnet mask, Default gateway, Preferred DNS server, and Alternate DNS Server boxes. Note the IP address as you will need it later in the installation process.

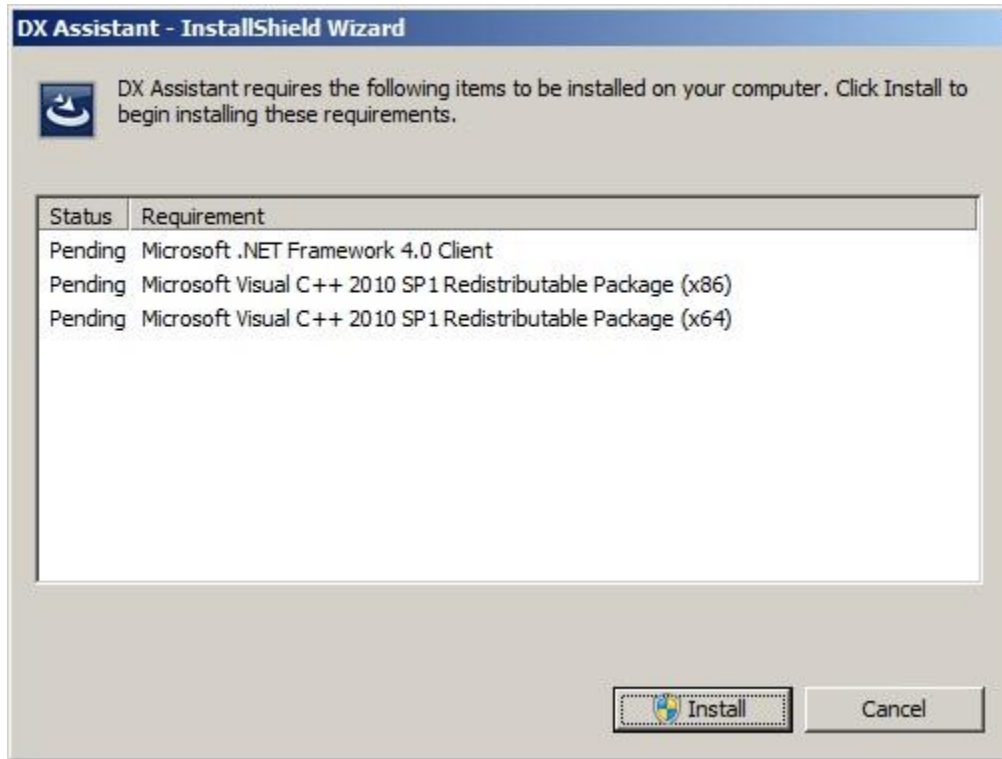


**Figure 5: Populated IPv4 Properties Window**

10. Save the settings by clicking OK.

## **Install DX Assistant**

1. Close all open applications and wait for any other running installers to finish before continuing.
2. Download the software or insert the installation CD into the DX Assistant hardware. Double click on the DX Assistant installer icon to begin running it.
3. Click Install on the first window to install the necessary components onto the system.



**Figure 6: Accompanying Software Required for DX Assistant**

4. After the additional software installation completes, review the information on the page that displays. Click the Next button to continue.



**Figure 7: DX Assistant Install Wizard**

5. Review and accept the EULA for the Wamp Server that displays, and then click Next.

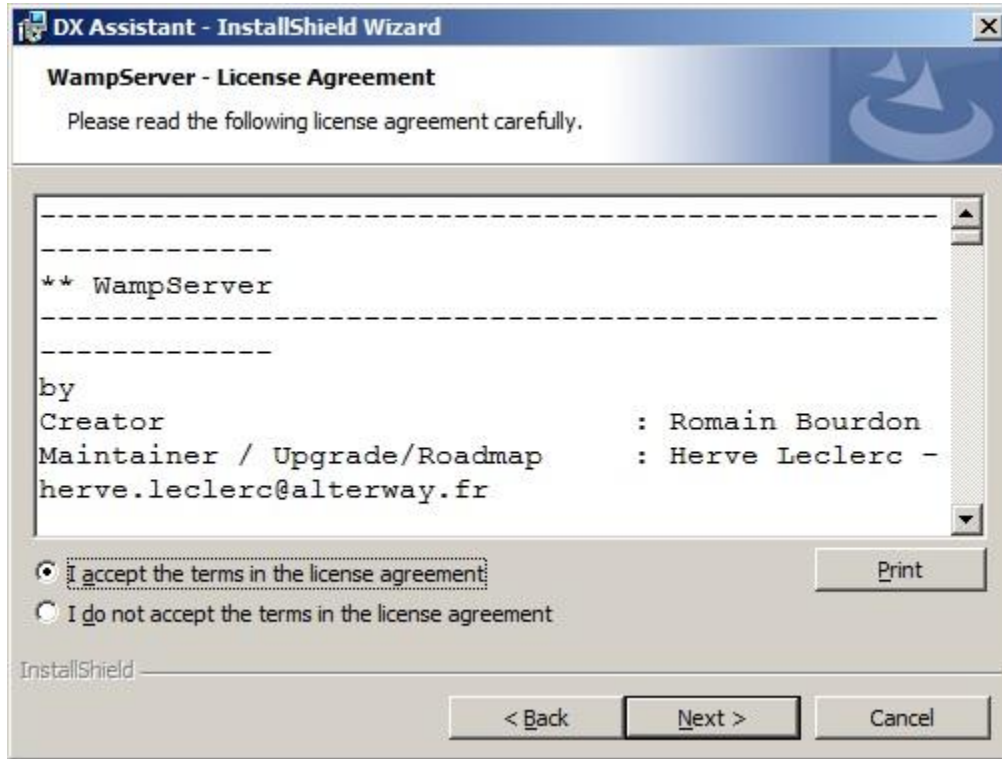


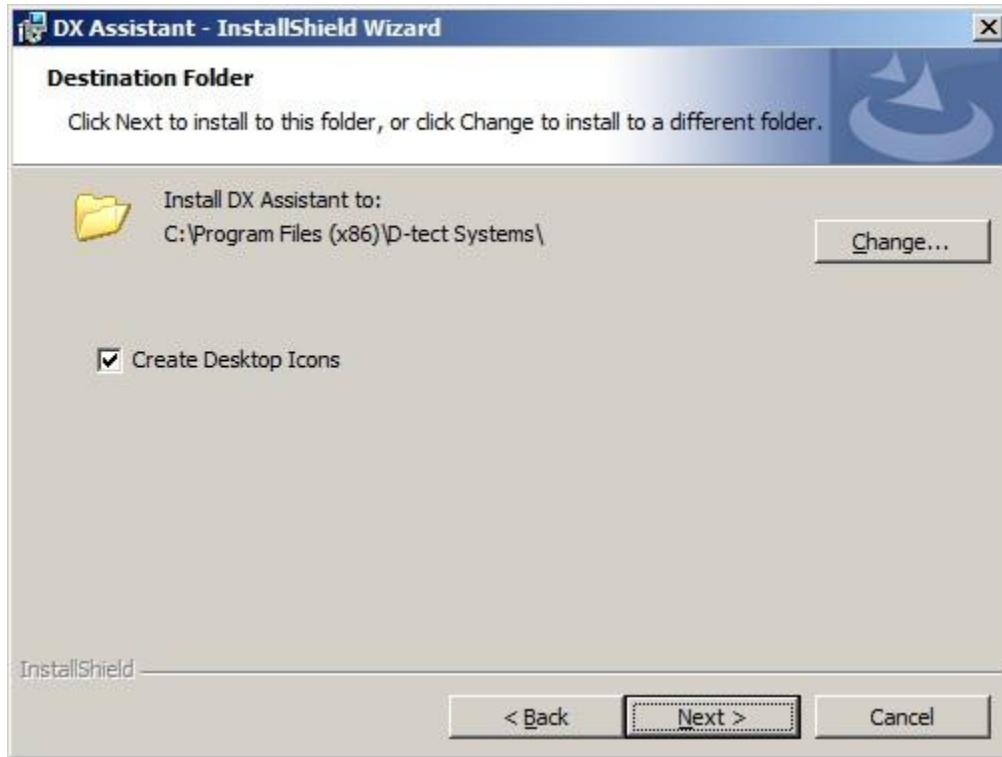
Figure 8: Wamp EULA Screen

6. Review and accept the EULA for the D-tect property that displays, and then click Next.



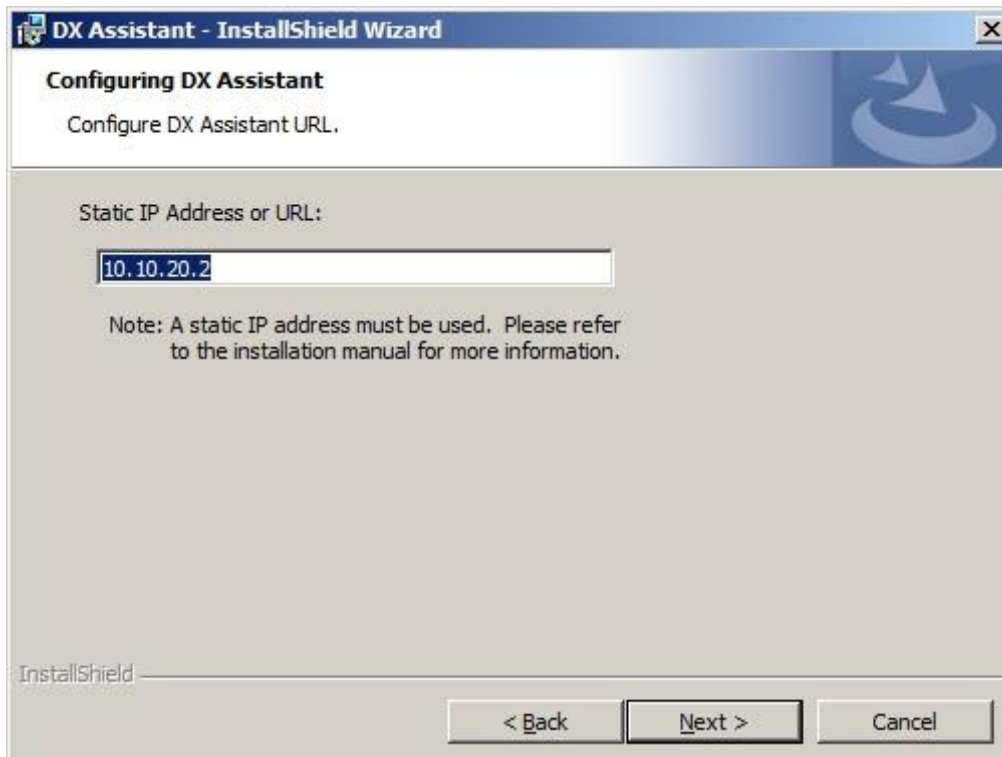
Figure 9: D-tect EULA Screen

7. On the next screen you can select where you want the software program installed and whether you want the installer to create a desktop icon. Click Next.



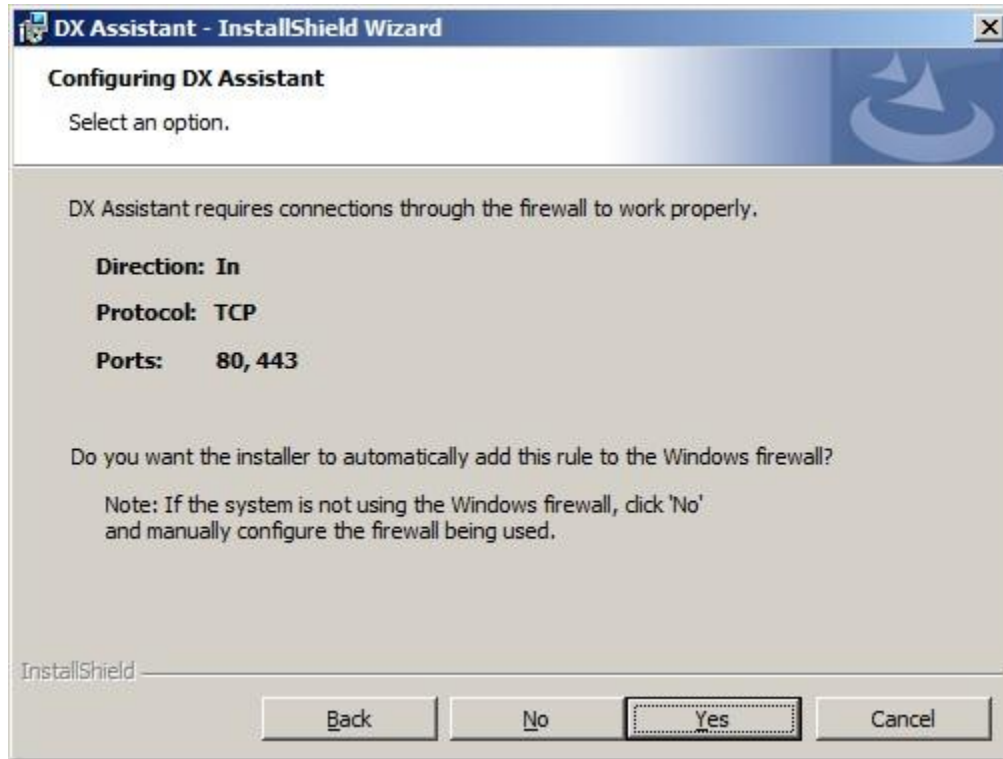
**Figure 10: Software Installation Destination**

8. Input the static IP address that was set up in part 1. Click Next.



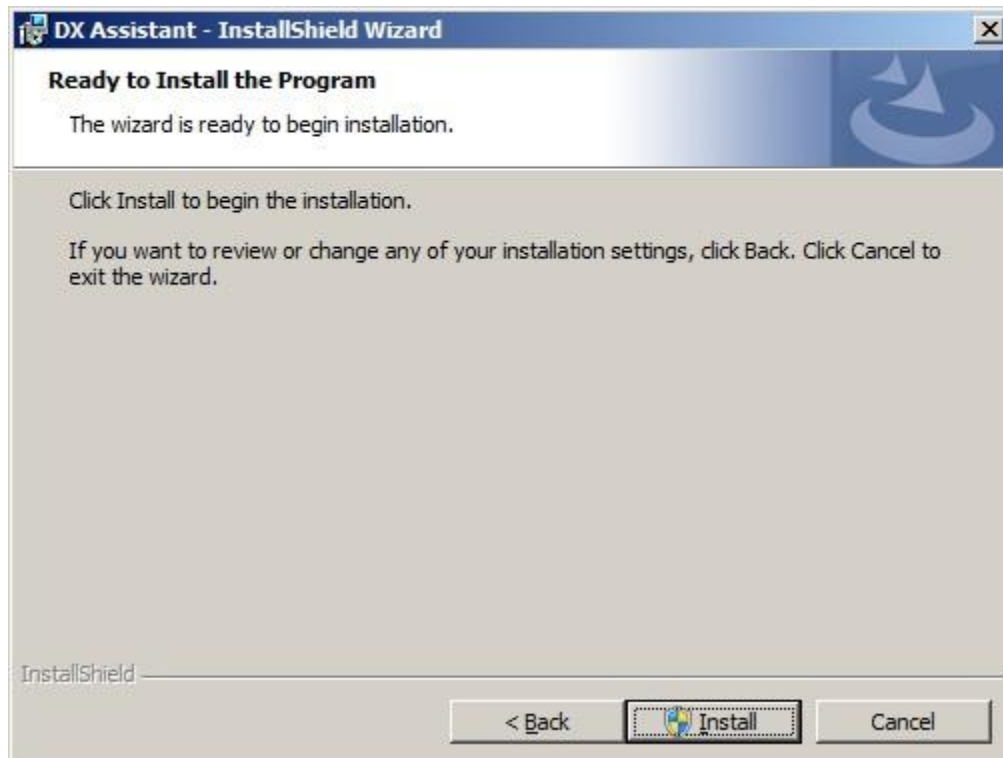
**Figure 11: Set Static IP Address**

9. Click the Yes button to allow the installer to create a rule for the Windows firewall.



**Figure 12: Allow DX Assistant to Connect through the Firewall**

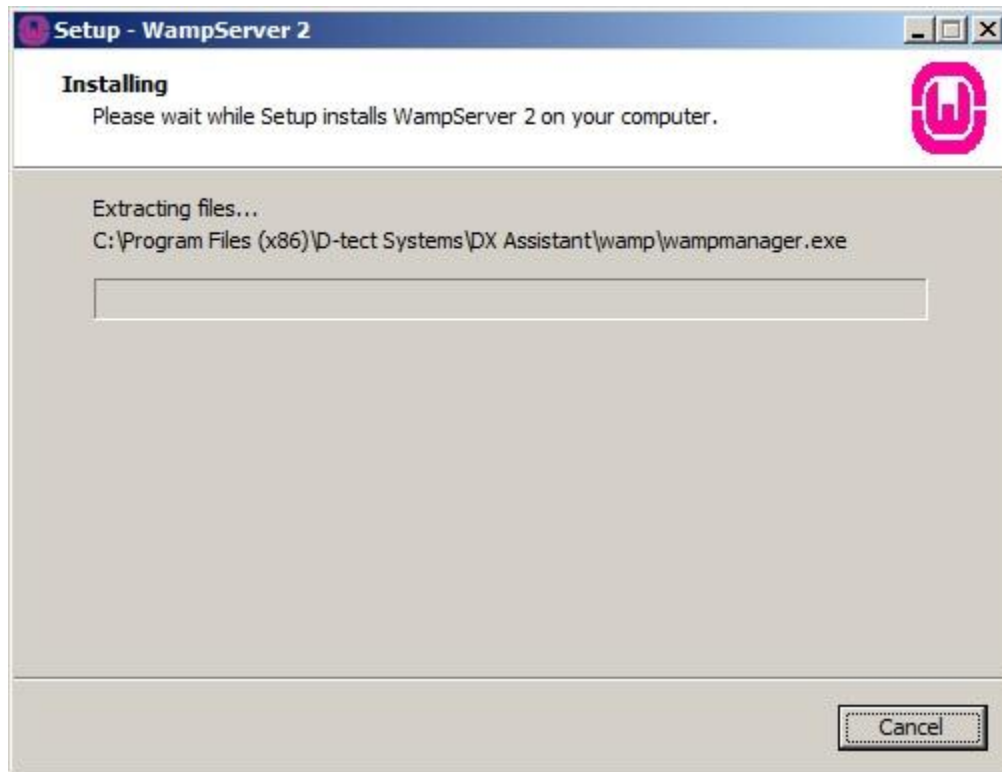
10. Click the Install button to start the installation of the DX-Assistant.



**Figure 13: Install DX Assistant**

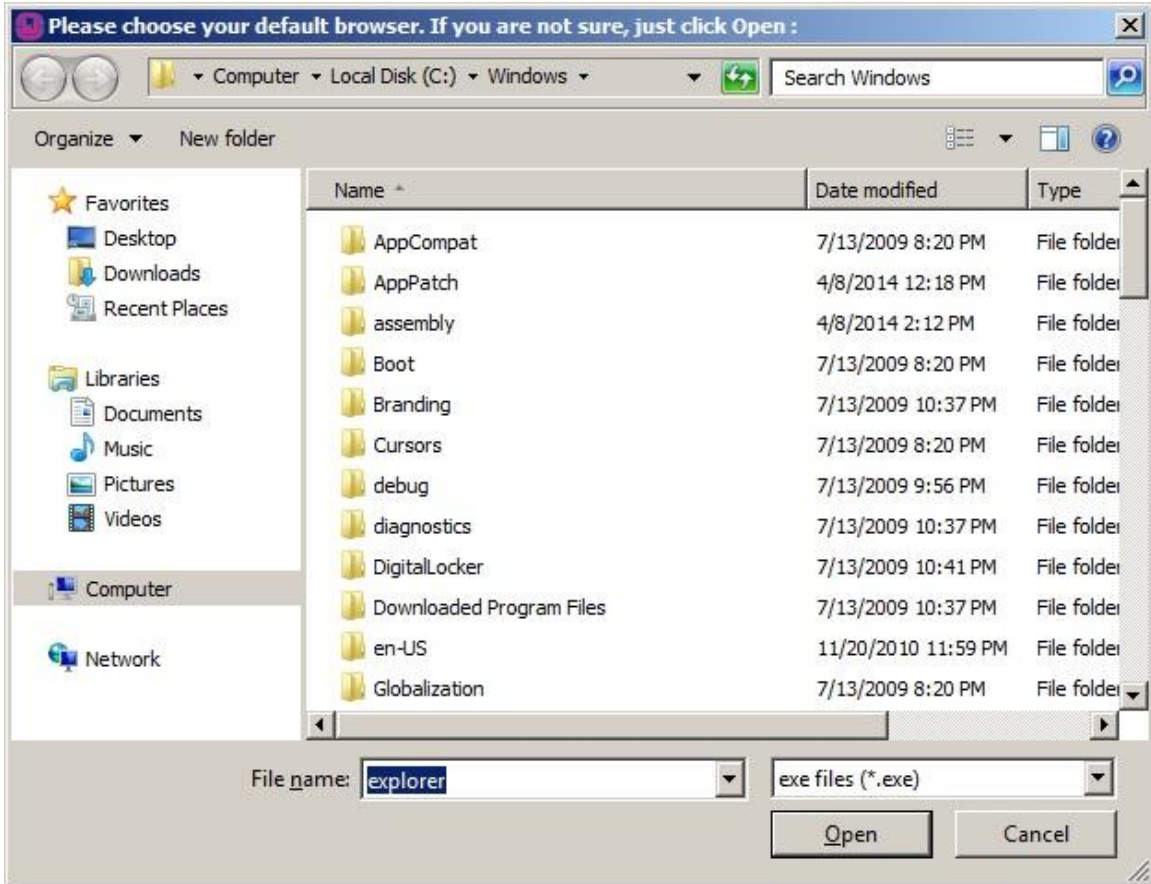


11. Wait for the installer to finish.



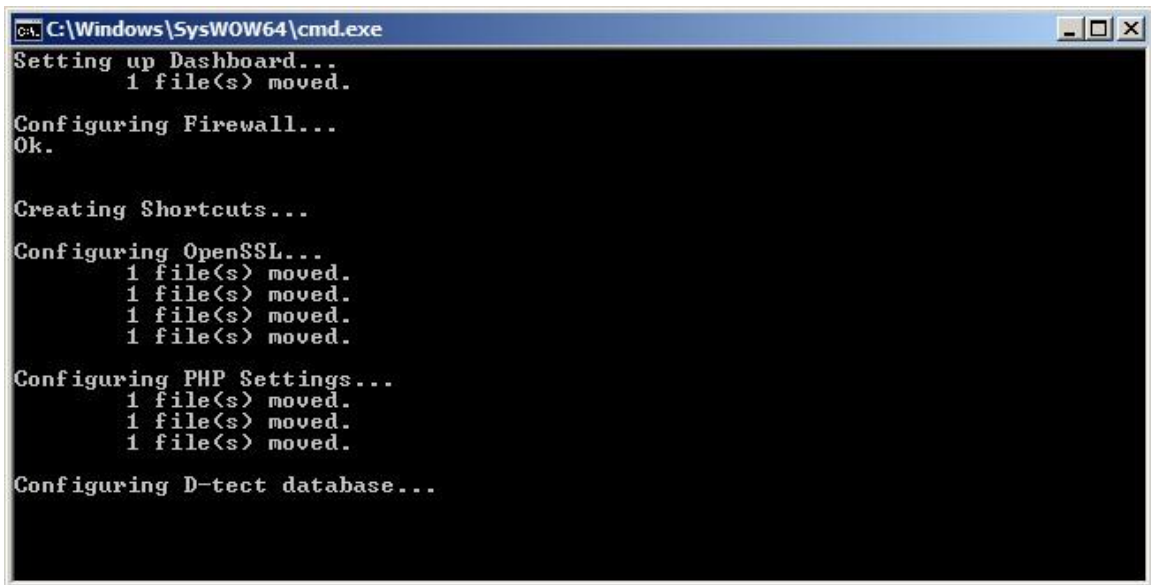
**Figure 14: Installation Progress Bar**

12. A window will pop up during installation and ask you to select a default browser. If you want to use Internet Explorer just click the Open button, otherwise navigate to the desired browser's executable file, select it and then click the Open button.



**Figure 15: Specify Default Browser**

13. A command prompt window will open and display some information while it configures a few components for the DX Assistant.



**Figure 16: Configuration Information Window**

14. Click the Finish button on the final window of the DX Assistant Installer.



**Figure 17: DX Assistant Installation Complete**

## Set Up a Device

1. When the Dashboard setup tool runs for the first time the DX Registration window will display. Fill in the desired Admin Name and Password and click the Submit button.

The image shows a window titled "DX Registration". The window has a blue header bar with the title. Below the header, the text "Admin Name and Password" is displayed in bold. There are three input fields: "Admin Name:" followed by a text box, "Admin Password:" followed by a text box, and "Repeat Admin Password:" followed by a text box. Below these fields is a "DX Assistant URL:" label followed by a text box containing the value "10.10.20.2". At the bottom left of the window is a "Cancel" button, and at the bottom right is a "Submit" button.

**Figure 18: DX Registration Window**

2. The main window for the DX Dashboard Set-up Tool will display.



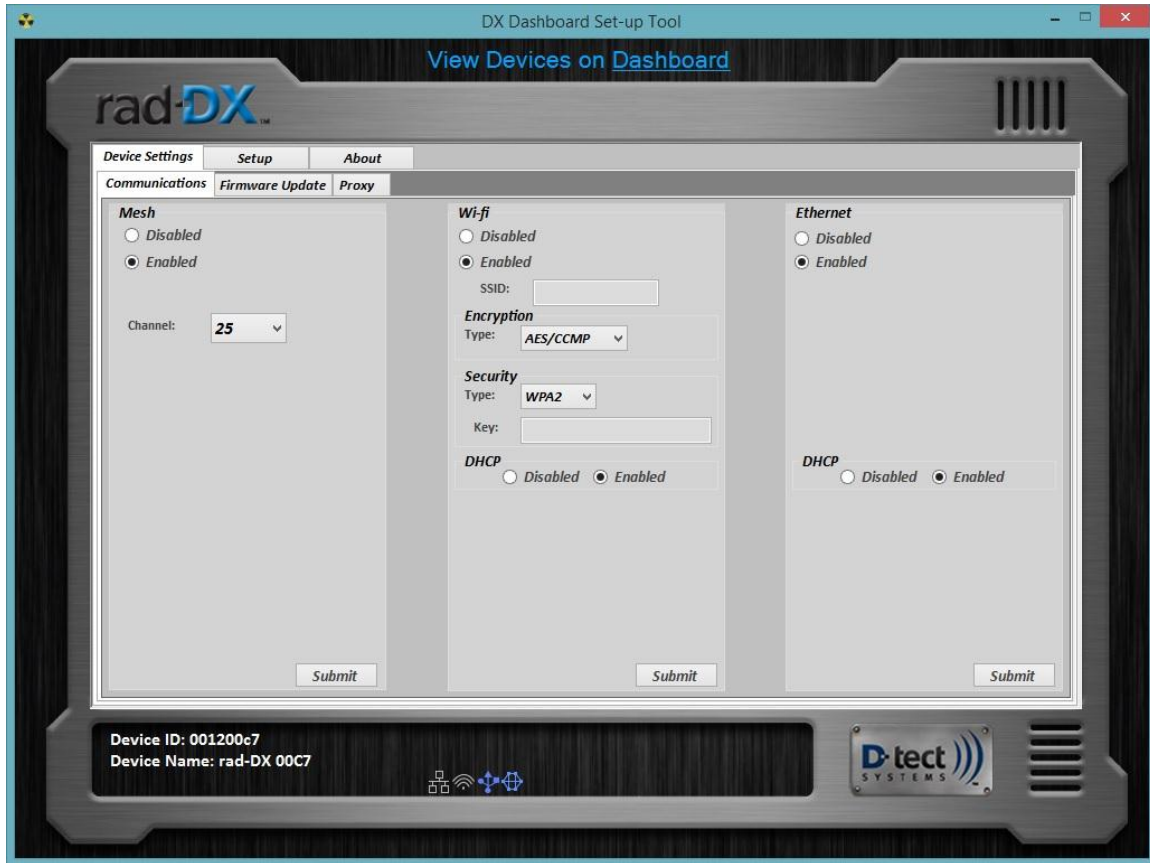
**Figure 19: DX Dashboard Set-up Tool Home Screen**

3. Plug a Rad-DX or Mini Rad-DX radiation detector into the computer via a USB cable.
  - a. If the device is brand new and not tied to any other accounts, the system will automatically assign it to the signed in account.
  - b. If the device was tied to a different account, a message box will pop up and display a locked window with some options. Select the Switch Device to Current Account button to automatically configure the device to your account.



**Figure 20: Locked Device Options Screen**

4. If the attached device is a Rad-DX that will be used as a gateway/host via Wi-Fi then do the following. Otherwise skip this step. Click on the Communications tab of the Device Settings tab. In the Wi-Fi settings pane enable Wi-Fi communication by selecting the corresponding radio button.
  - a. Input the appropriate Wi-Fi settings and then click the Submit button.



**Figure 21: Device Settings Communication Tab**

5. This concludes the installation of DX Assistant, your internal server for DX communication, configuration and monitoring.

For more information regarding the Rad-DX product line, you can download the product manuals directly from the D-tect website at <http://www.dtectsystems.com/downloads.html>.