

DX-View Quick Start Guide

DX-View is a PC-based software application that gives you the ability to monitor in real-time one or more Rad-DX radiation detectors. Using DX-View, you can set radiation alarm levels, view a real-time graph, and download historical data.

The DX-View software is only available via download. Please follow the steps outlined below to download your DX-View software.

1. Download DX-View

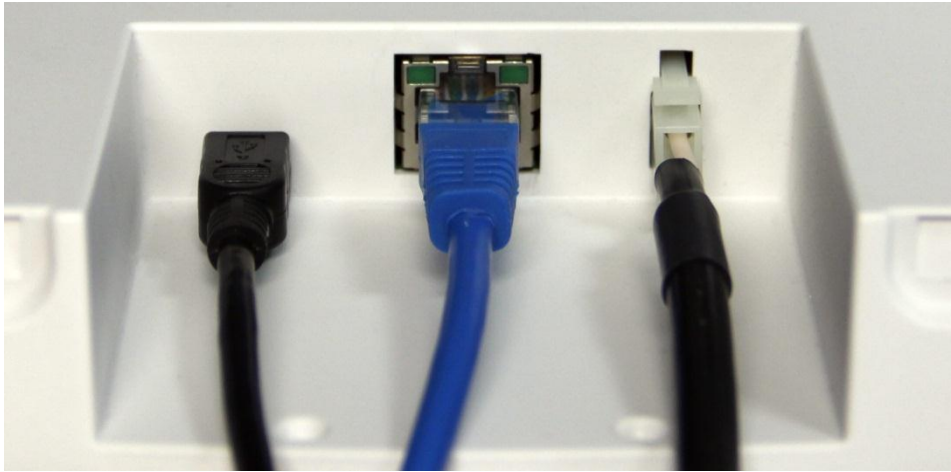
- a. If you have already visited the URL below and downloaded the DX-View software, continue to step 2.
- b. Register: Go to <https://dx.dtectsystems.com>, click the Register button in the lower right corner, and complete the DX Account registration form. You will be asked to create an Admin Username, Admin Password, and fill in contact information. Be sure to check the 'Download DX-View' checkbox before clicking Submit. An Account Confirmation email will be sent to the specified email address that contains an assigned Customer ID and confirms your Admin Name—but NOT your Password. Please do not lose your Password.
- c. Upon completing the Account Registration form, you will be directed to download the software. Once you have downloaded the software, proceed to the next step.

2. Install DX-View

- a. Double-click on the downloaded file to start the installation. Several install windows will appear that will require you to click Next, Install, and Finish. You will also be required to accept the Software License Agreement.
- b. Launch DX-View.
- c. The installer will place the black and yellow DX View icon on your desktop. Click the icon to launch the DX View. Launching the DX View will take you to the Home screen.

3. Turn on the Rad-DX

- a. Turn on the Rad-DX detector by connecting the power cable to the back of the device and to an outlet in close proximity to your computer. The boot up process takes a couple of minutes.
- b. Once the device has completed the boot up process, connect the Rad-DX detector to your computer with the USB cable.



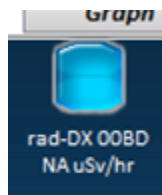
Back of Rad-DX

Left Port is USB – Center Port is Ethernet – Right Port is Power

- c. After a few moments, the Enter Credentials popup will appear. This is a security precaution to ensure that only authorized users can access the device. Enter the same exact login credentials—Administrator Username, Administrator Password, and Customer ID.

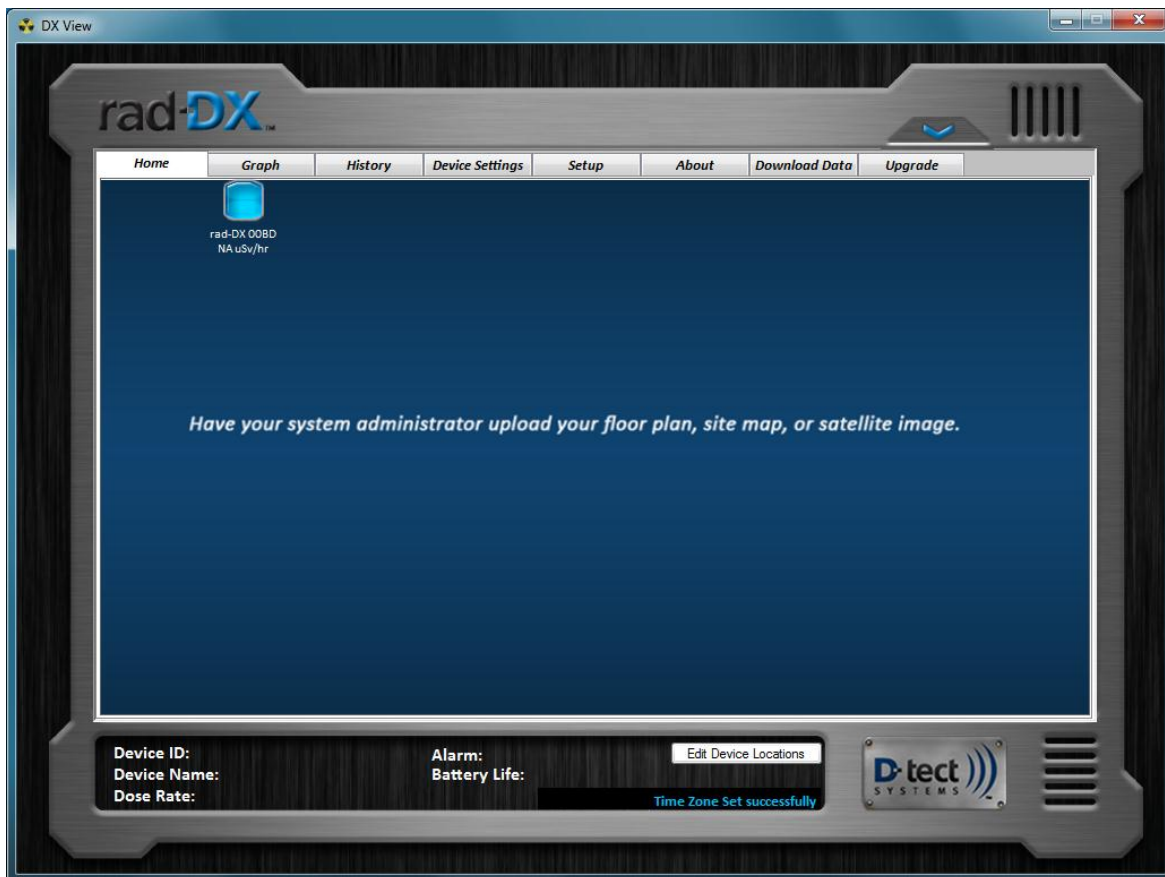
A screenshot of a "New device configuration" dialog box. It contains three input fields: "Administrator Username:", "Administrator Password:", and "Customer ID:". The "Customer ID" field has a small note next to it: "(Enter a 4 digit hexadecimal number, ie 0001)". At the bottom left is an "Exit" button and at the bottom right is a "Submit" button.

- d. After a few moments, a Rad-DX icon will appear as shown below.



4. Configure Rad-DX

- a. Once the blue icon appears, click on the icon. This will cause the lower window to populate with information specific to the device, such as Device ID, Device Name, Dose Rate, Alarm Level, and Battery Life. This will also allow you to view the Graph, History, and Device Settings tabs for this device.
- b. The following section is a brief explanation of each tab. You may also refer to the Rad-DX manual for a more detailed description of the features and functions of your Rad-DX.



5. Explanation of DX-View Screens

Screen	Brief Explanation
Graph	The Graph Screen shows real-time dose rate (including background radiation) in a 6 minute or 30 minute window. You can change from a 6 minute window to a 30 minute window by clicking on the “6 min” tab located at the bottom left of the screen.
History	The History screen allows you to view a historical graph by selecting a Begin Time and End Time, then pressing Plot.
Device Settings	The Device Settings Screen allows you to set or change specific device settings such as device LCD display settings, alarm levels, communication settings, and firmware updates.
Setup	The Setup Screen allows you to set the Radiation Units for the DX-View displays or to upload a map or floor plan to the Home Screen, and enable the audio alarm feature. The bottom section displays the Remote Server information such as Administrator Username, Administrator Password and Customer ID. This information is populated from the popup window that appears when you configure your first Rad-DX.
About	The About Screen displays the DX-View version as well as technical support contact information.
Download Data	You can download a specific timeframe of data to an Excel spreadsheet for further analysis in the Download Data Screen. Simply, chose which detectors to include, select a Start Time and End Time, select the Time Zone, and select if you want all data or just Alarmed Events by selecting Show Alarm Events Only, then press Download. An Excel document will automatically be created with the data being displayed.
Upgrade	The Upgrade tab allows the user to update the firmware on multiple devices at once. The firmware upgrade can be through a direct USB connection or through a DX Link.